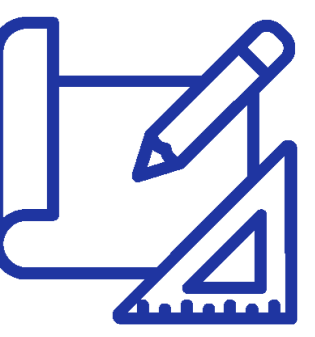
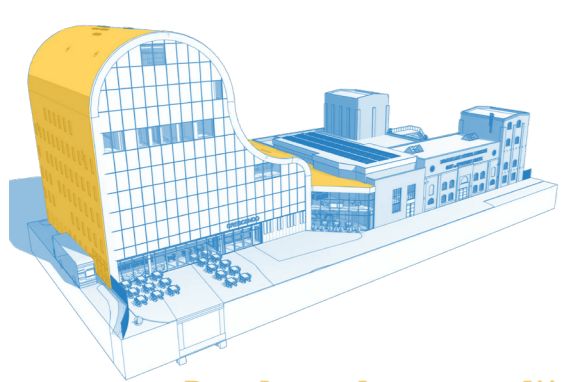
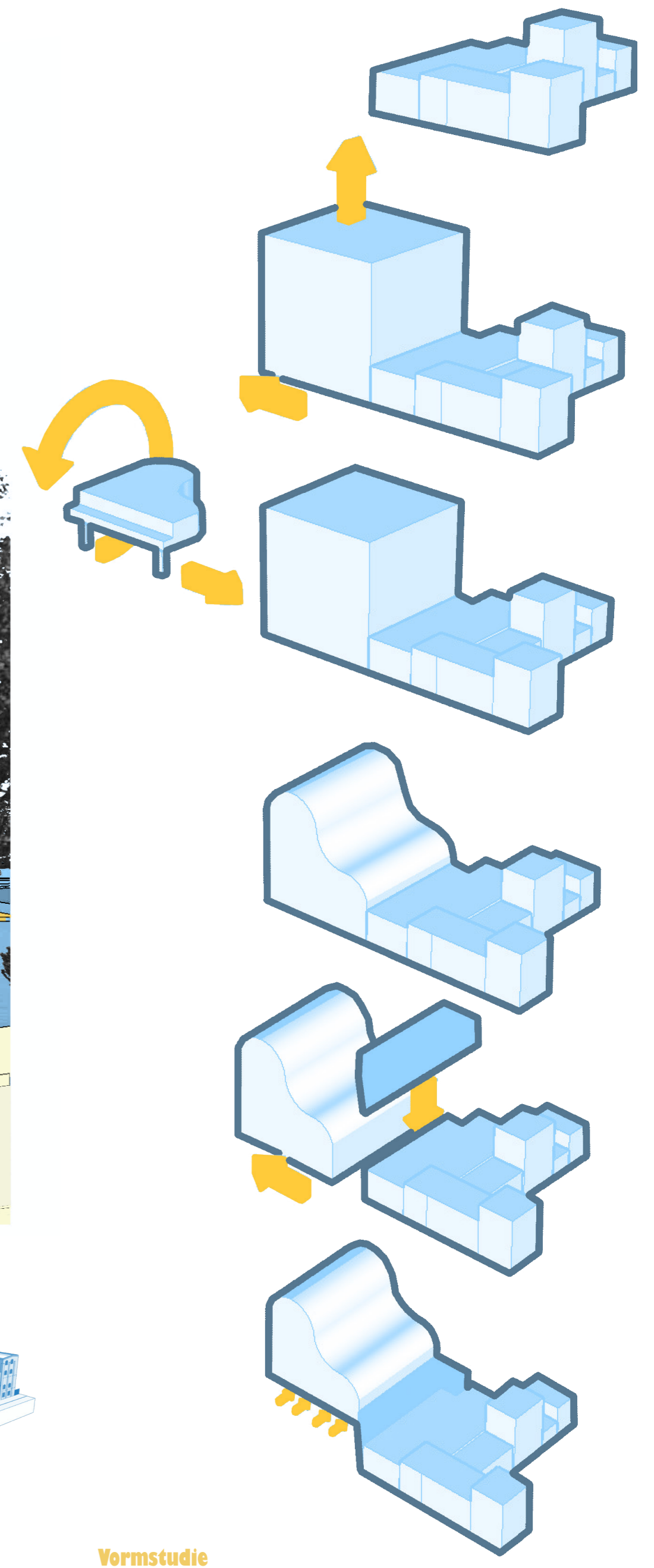


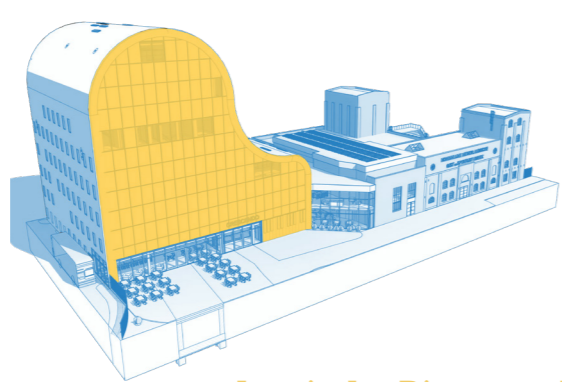
# Podium 015 - Crescendo



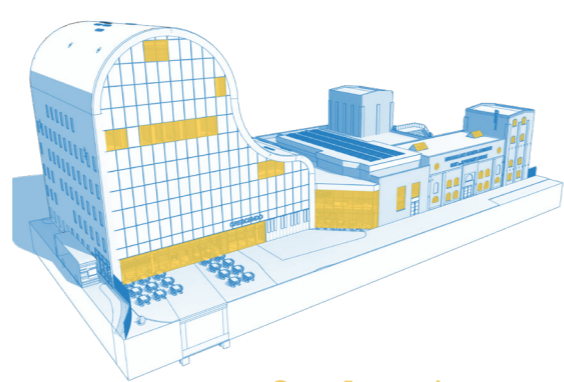
Stefan Vuijst 6061958  
Poster eindpresentatie ON6



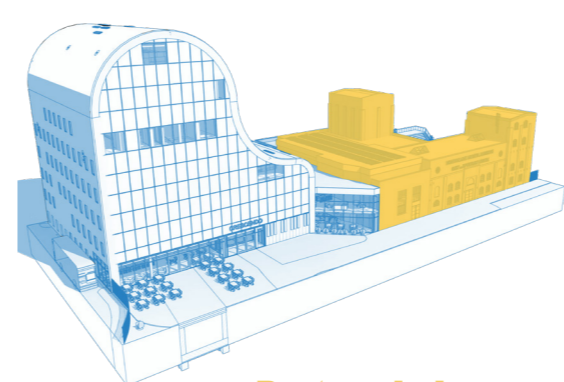
Doorlopende groene lijn



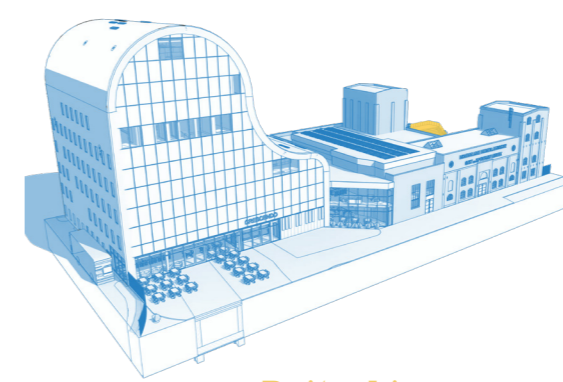
Iconische Pianogevel



Gevelopeningen

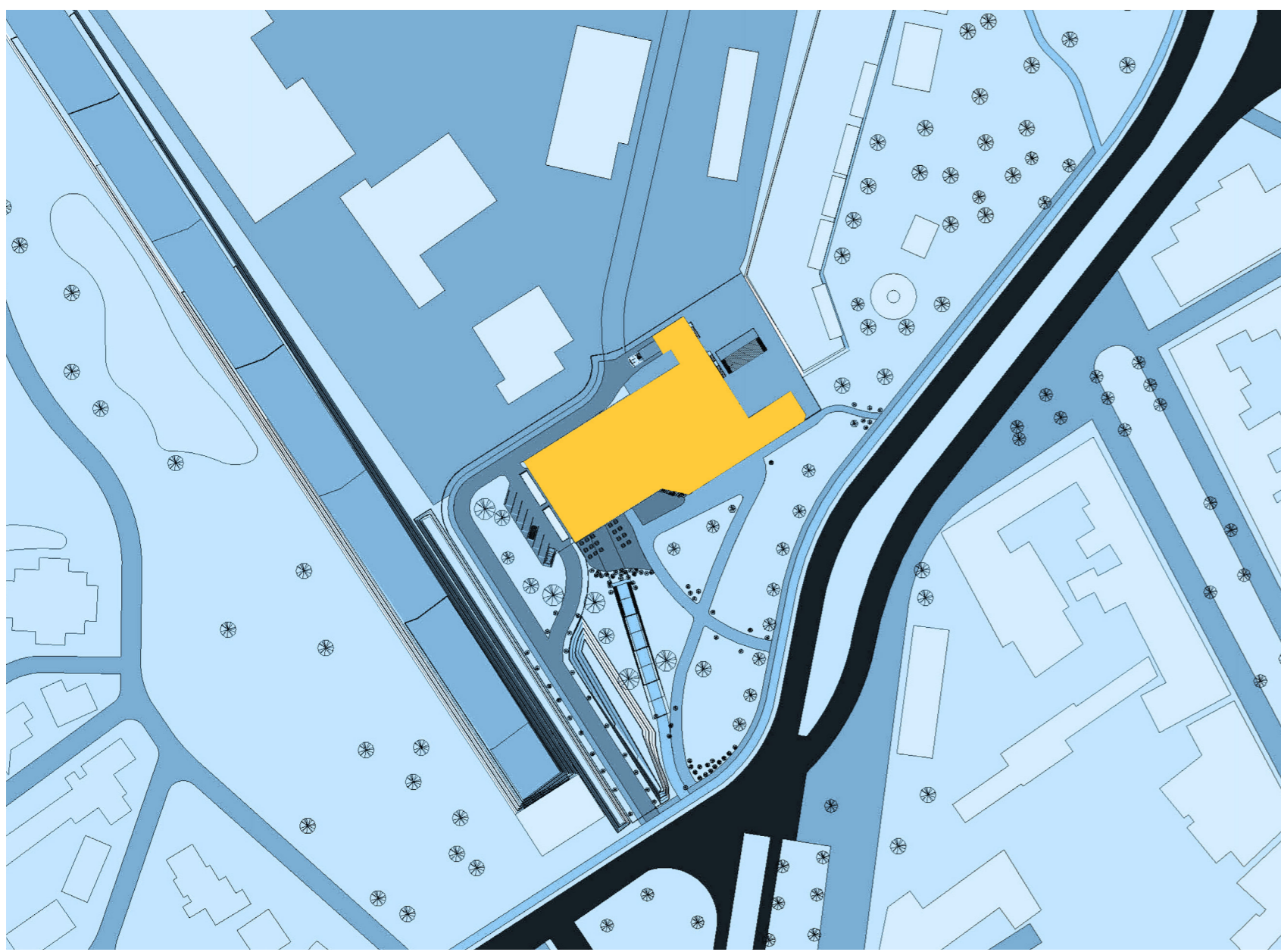


Bestaande bouw

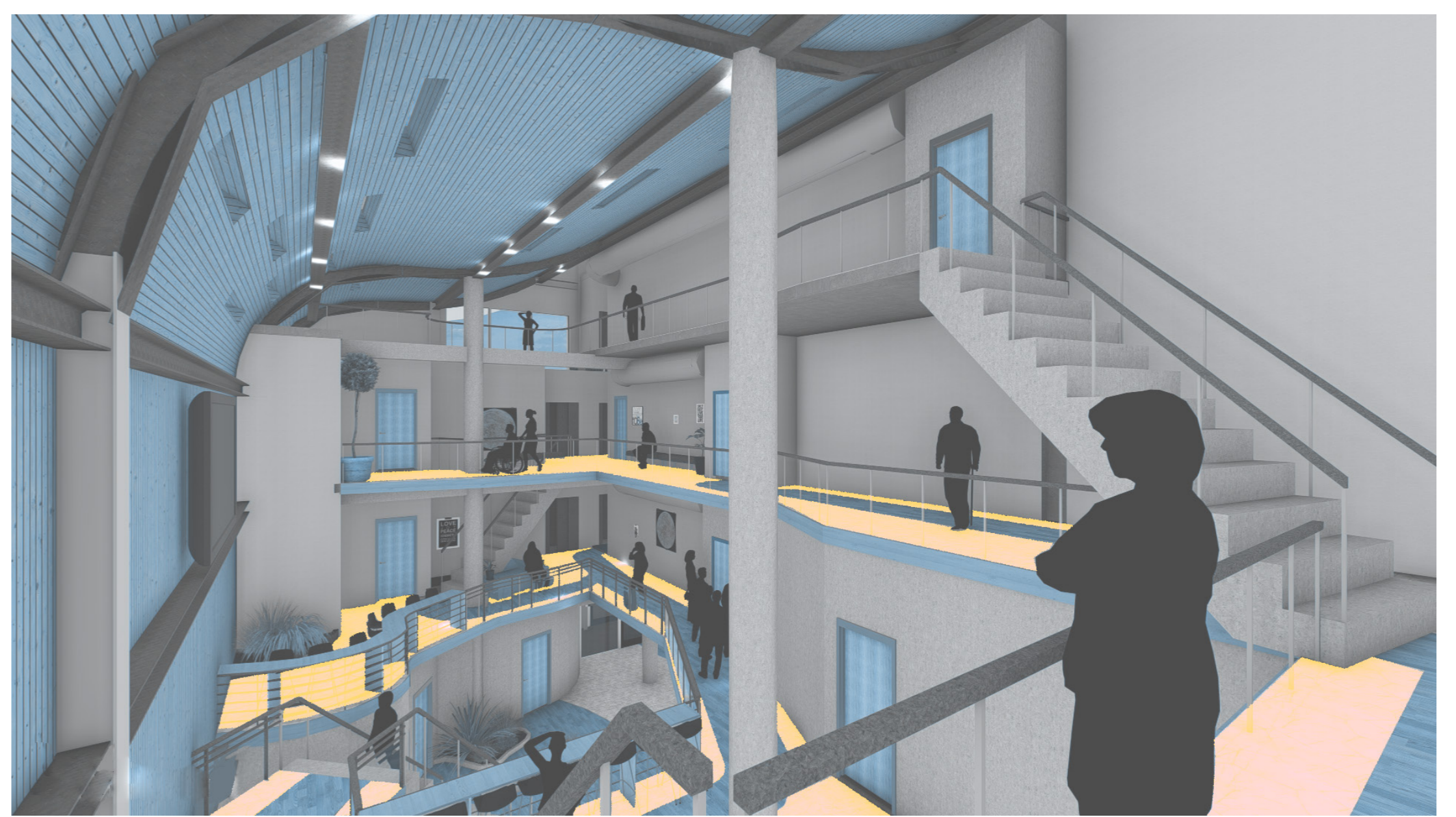


Buitenbioscoop

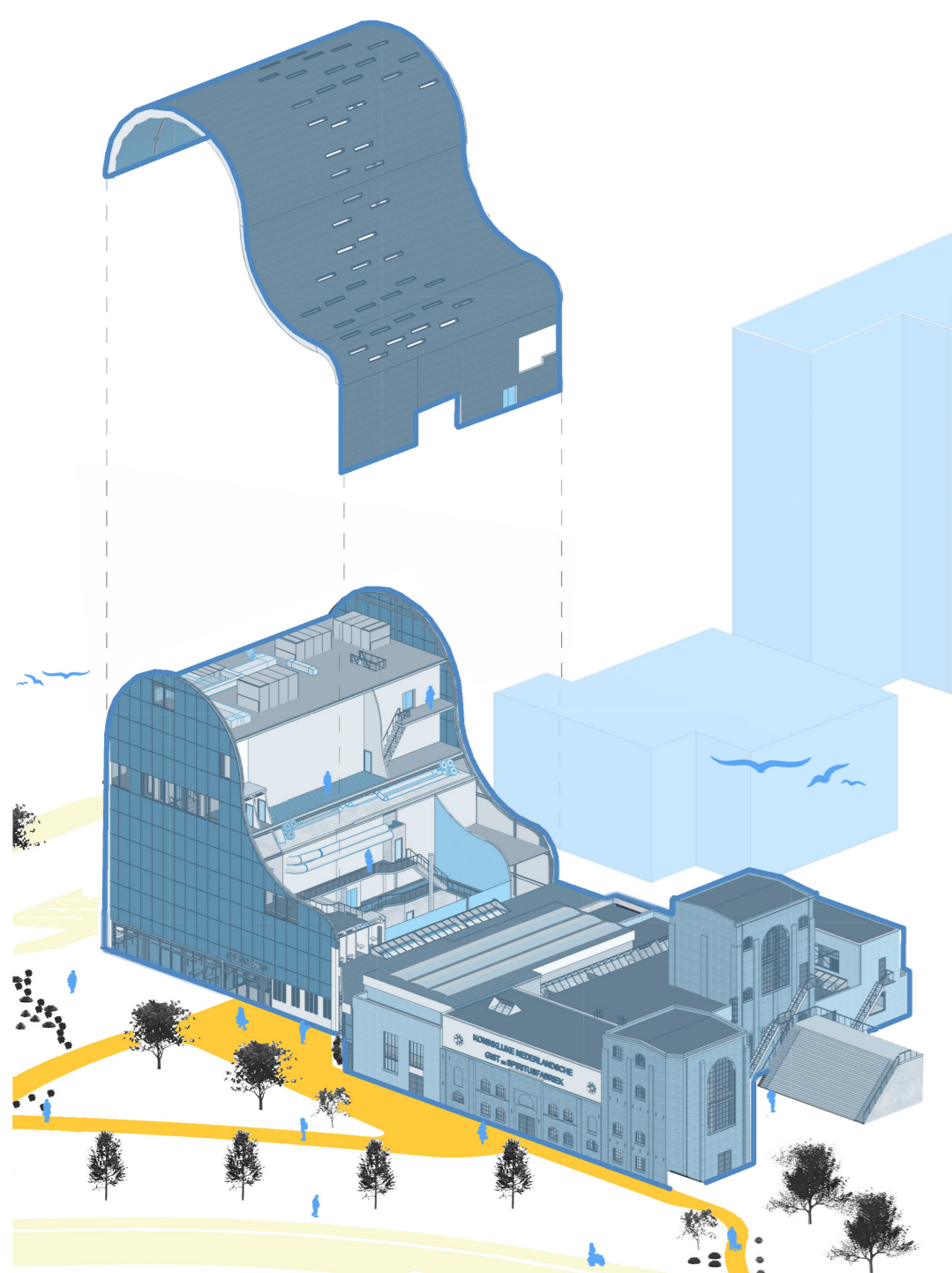
Vormstudie



Situatie 1:500



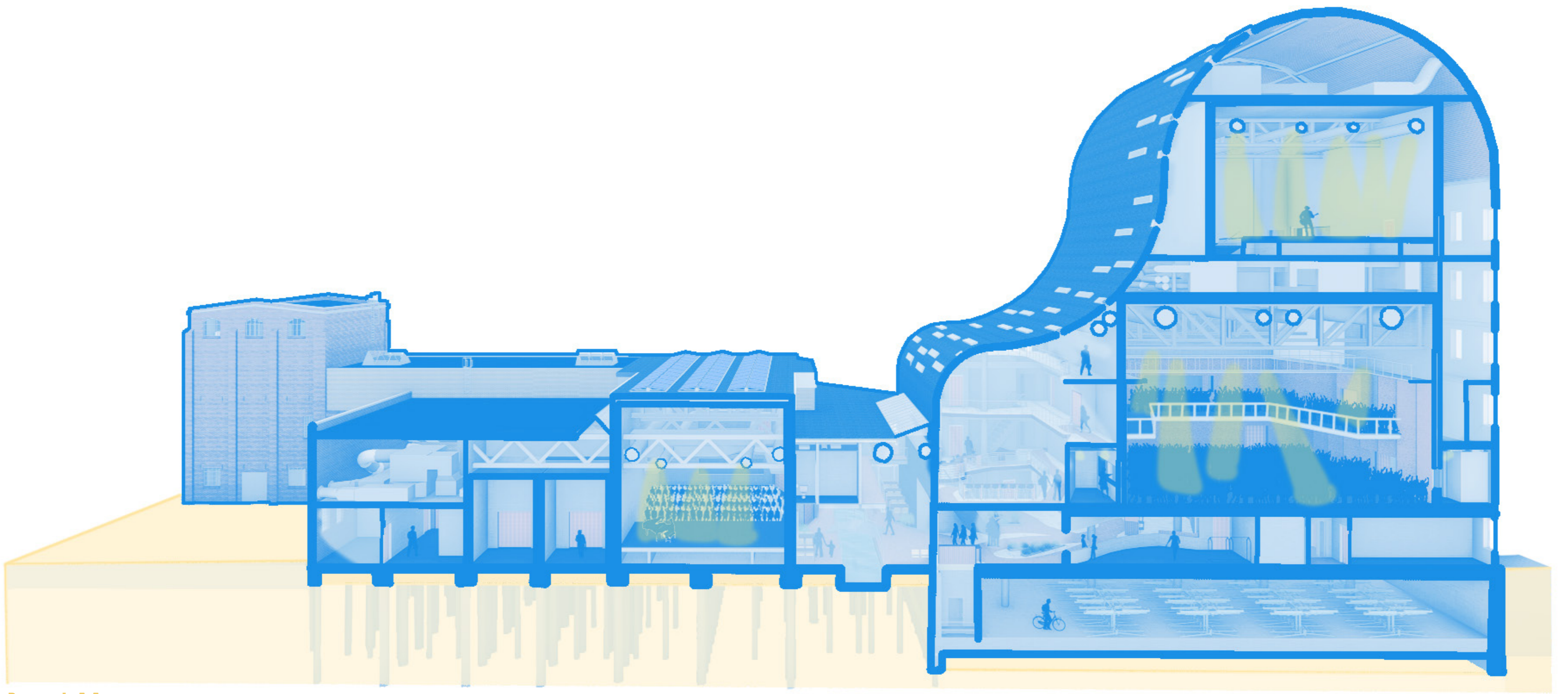
Foyer - split level



Exploded view

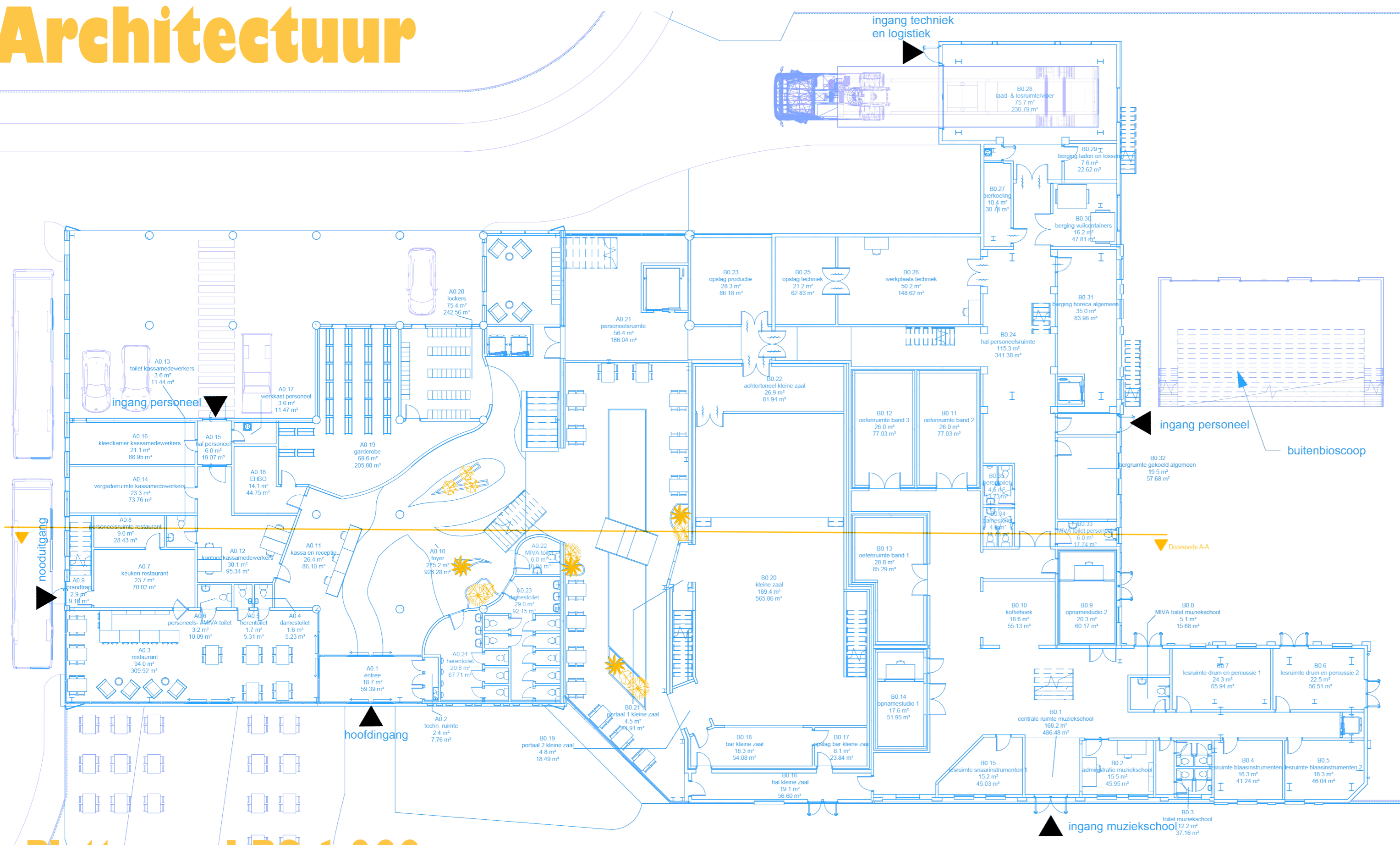


Voorgevel

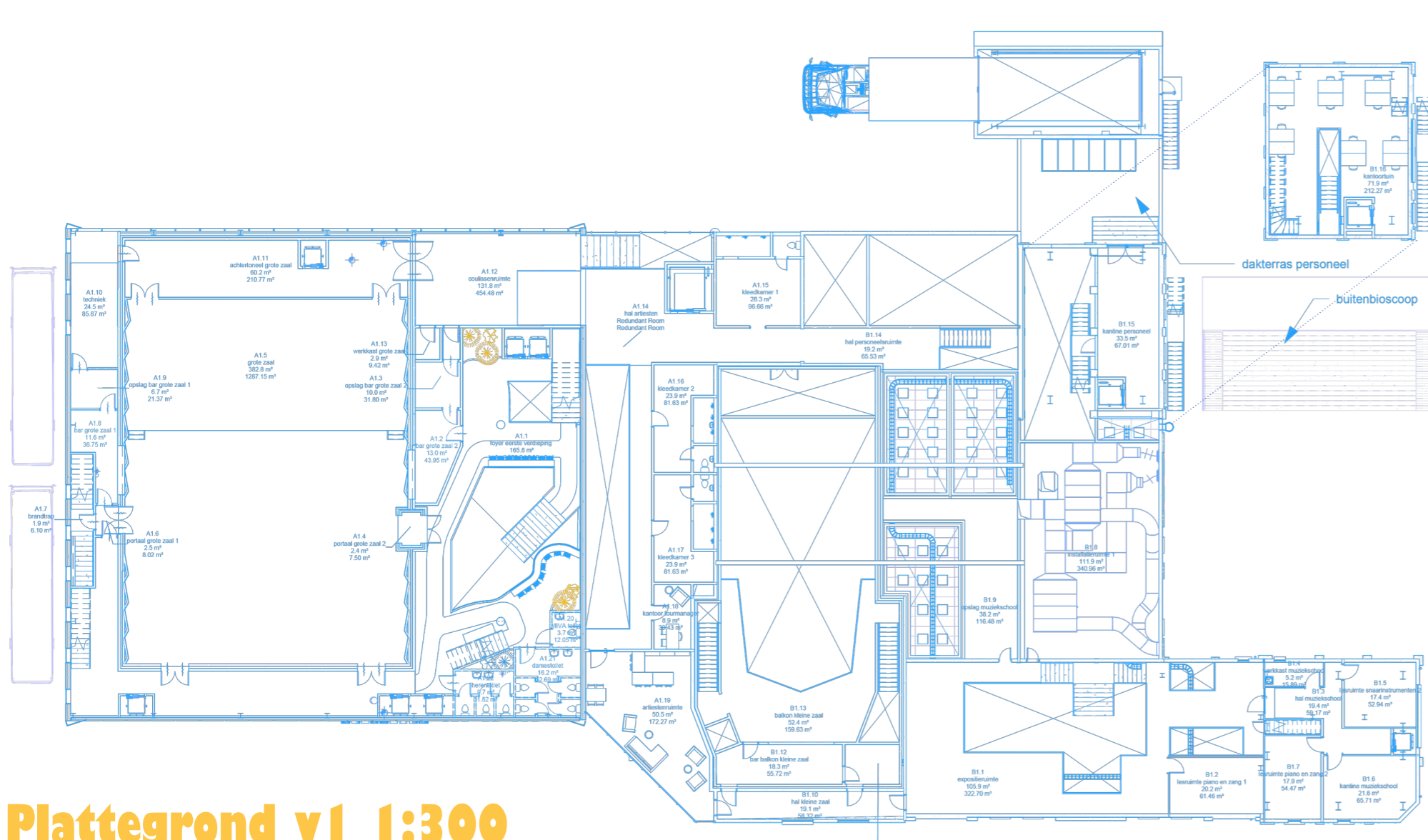
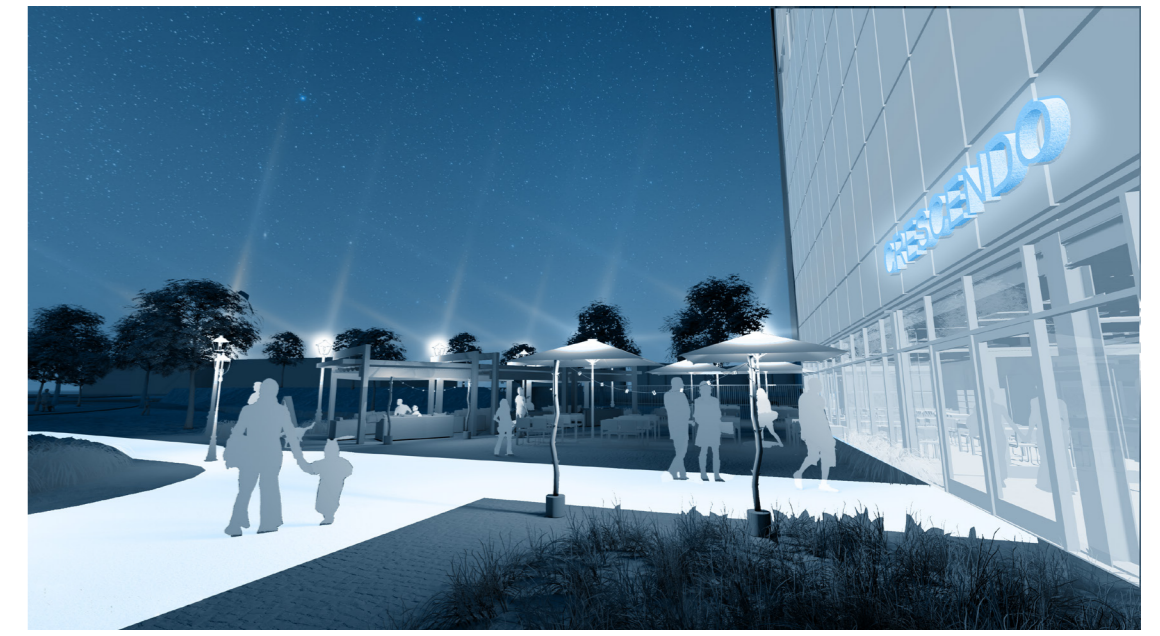
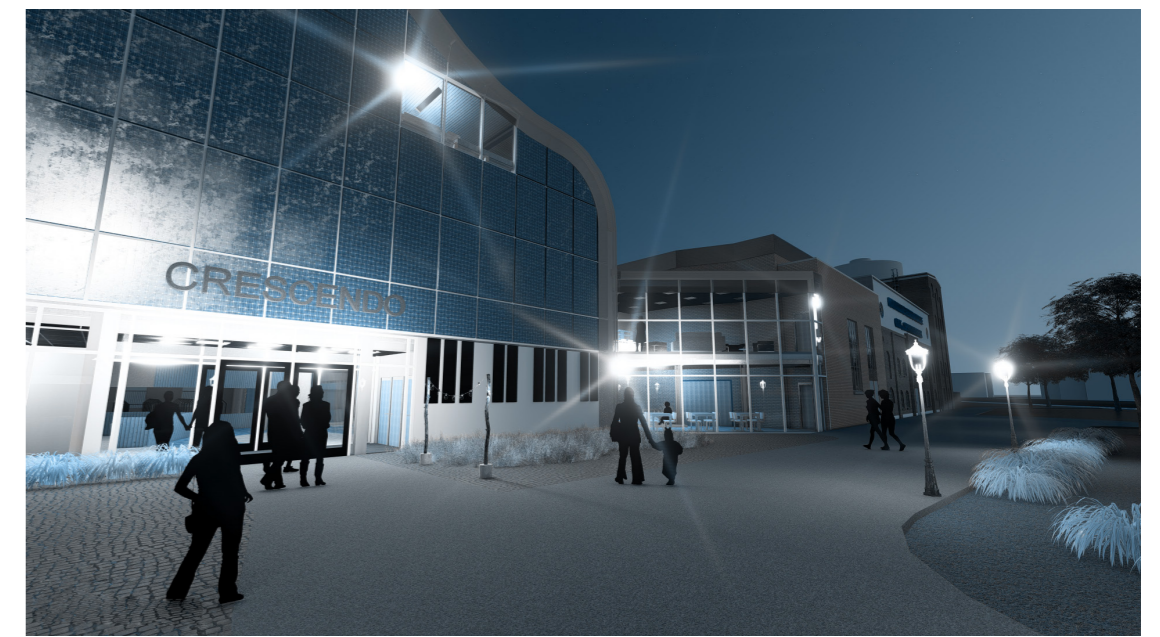


Doorsnede A-A

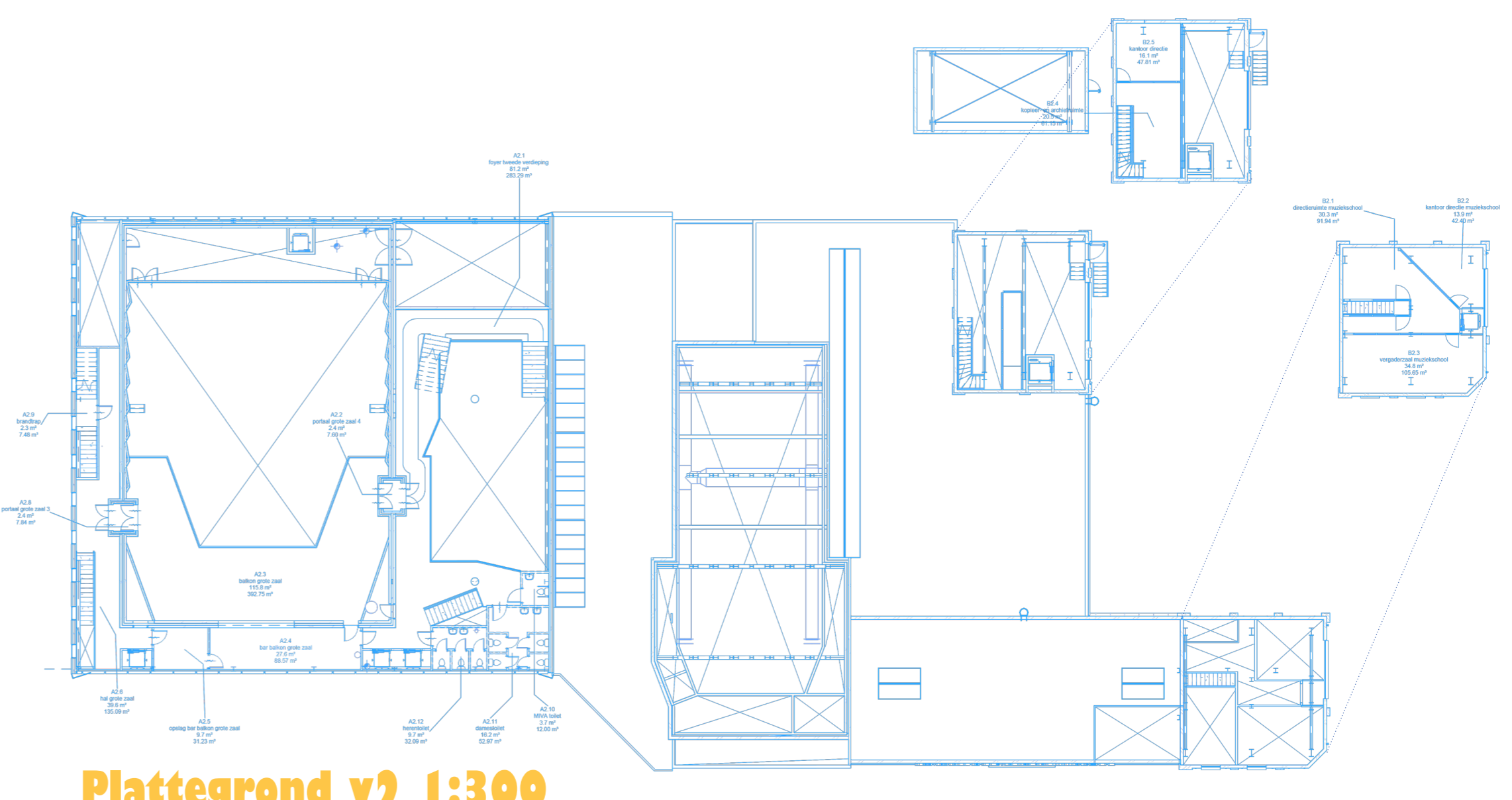
# Architectuur



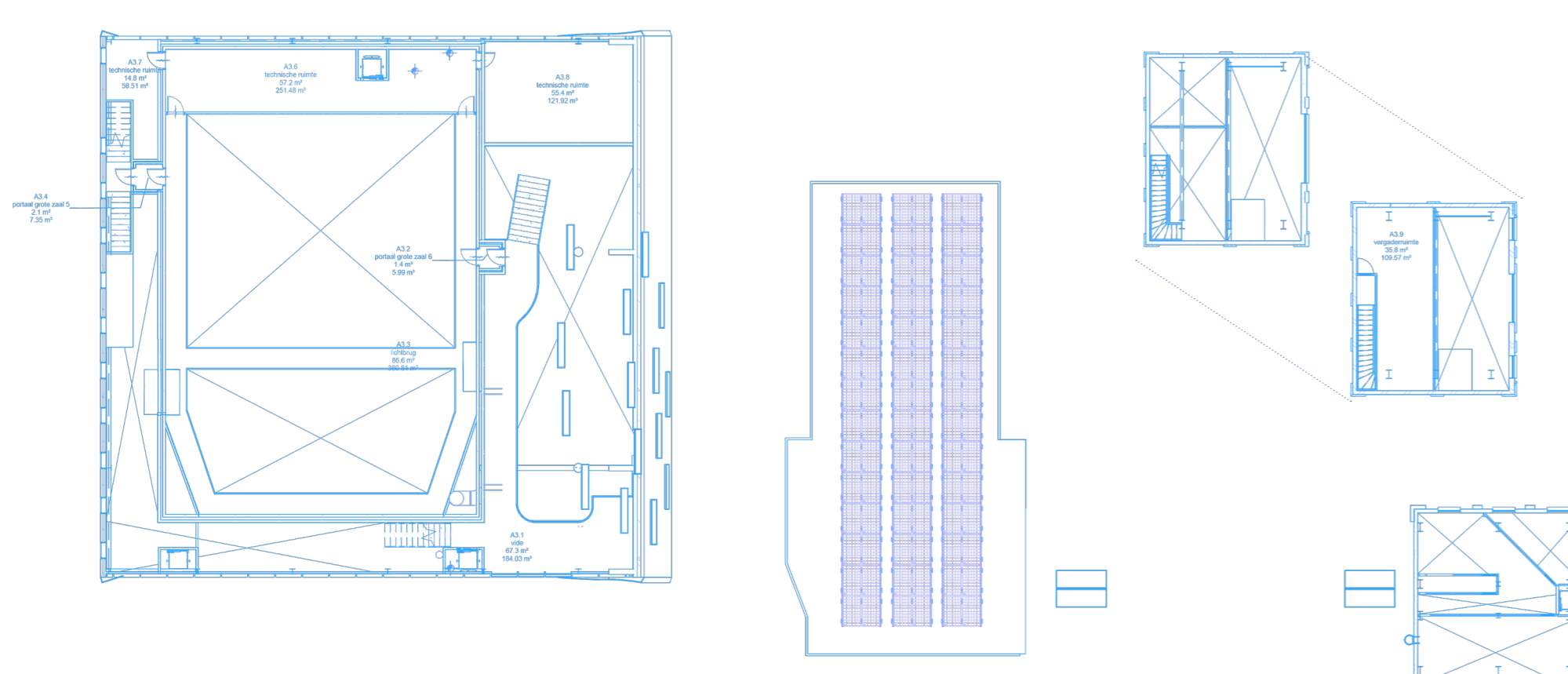
Plattegrond BG 1:200



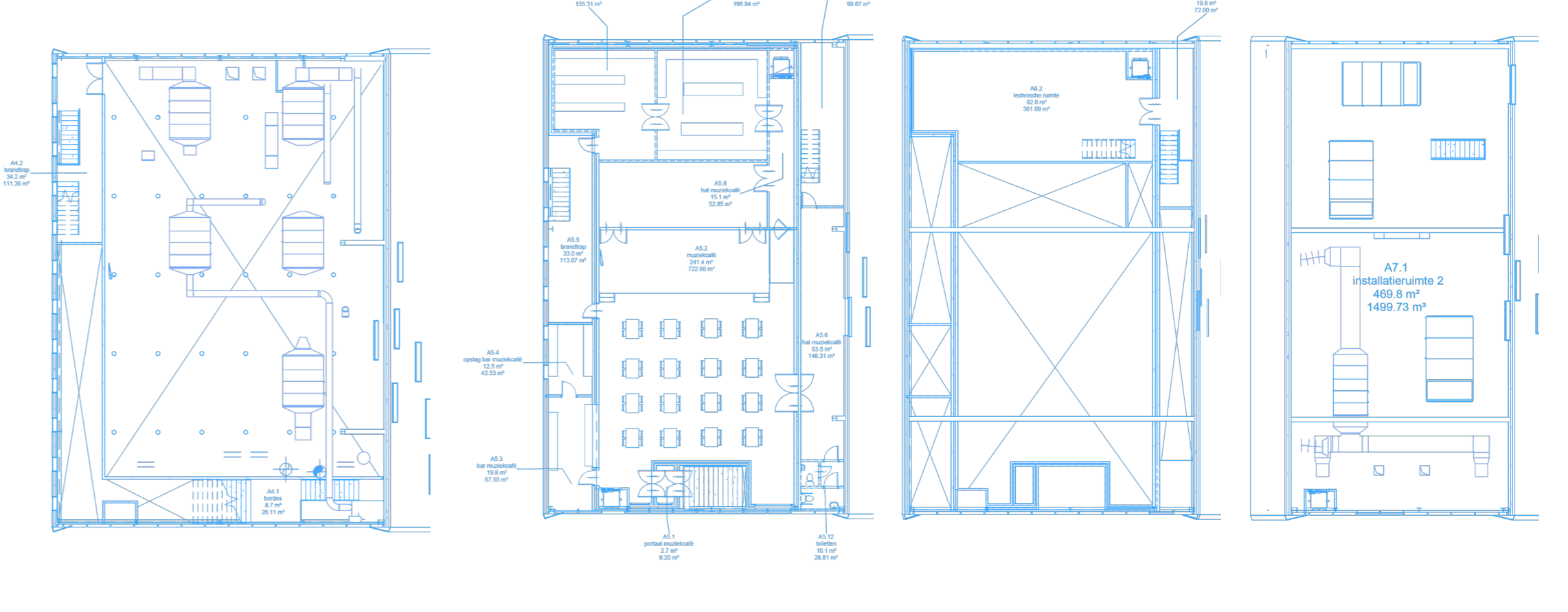
Plattegrond v1 1:300



Plattegrond v2 1:300

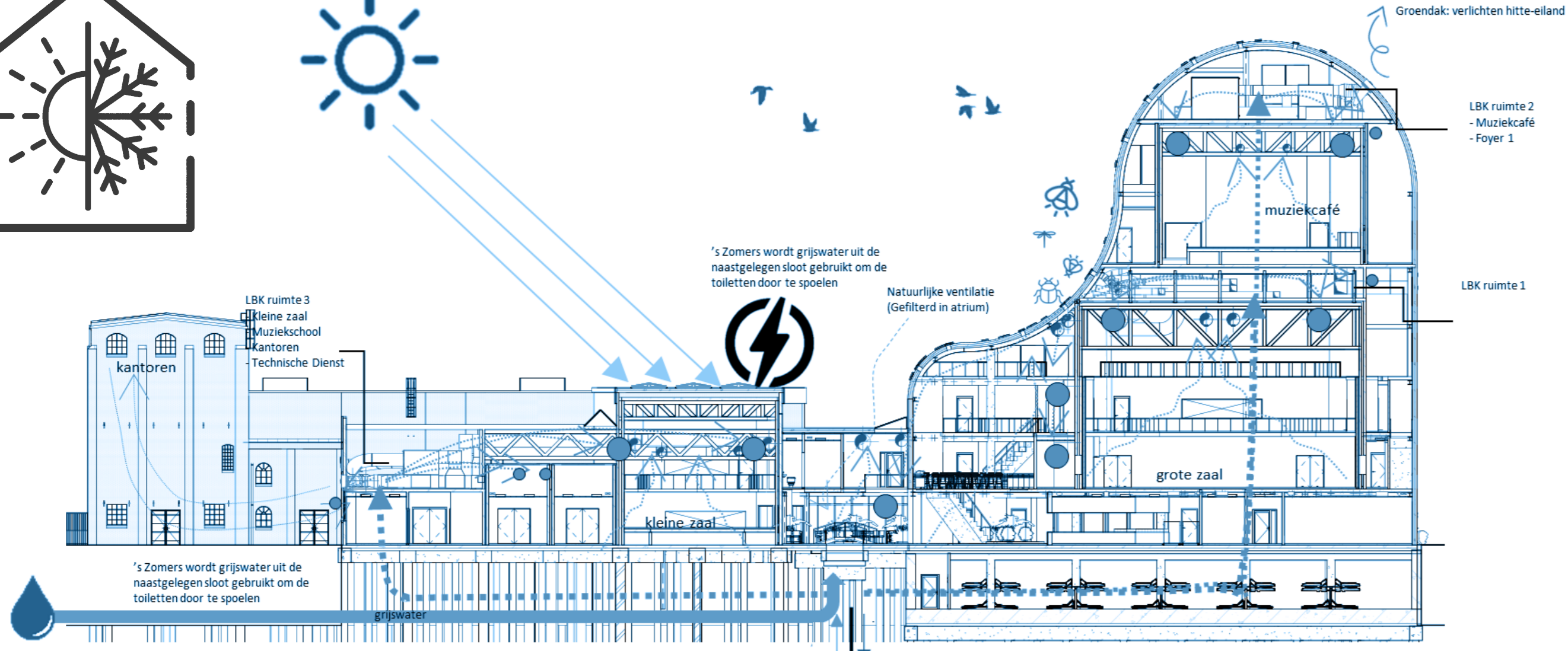
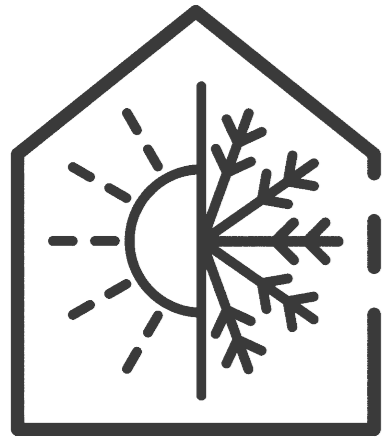


Plattegrond v3 1:300

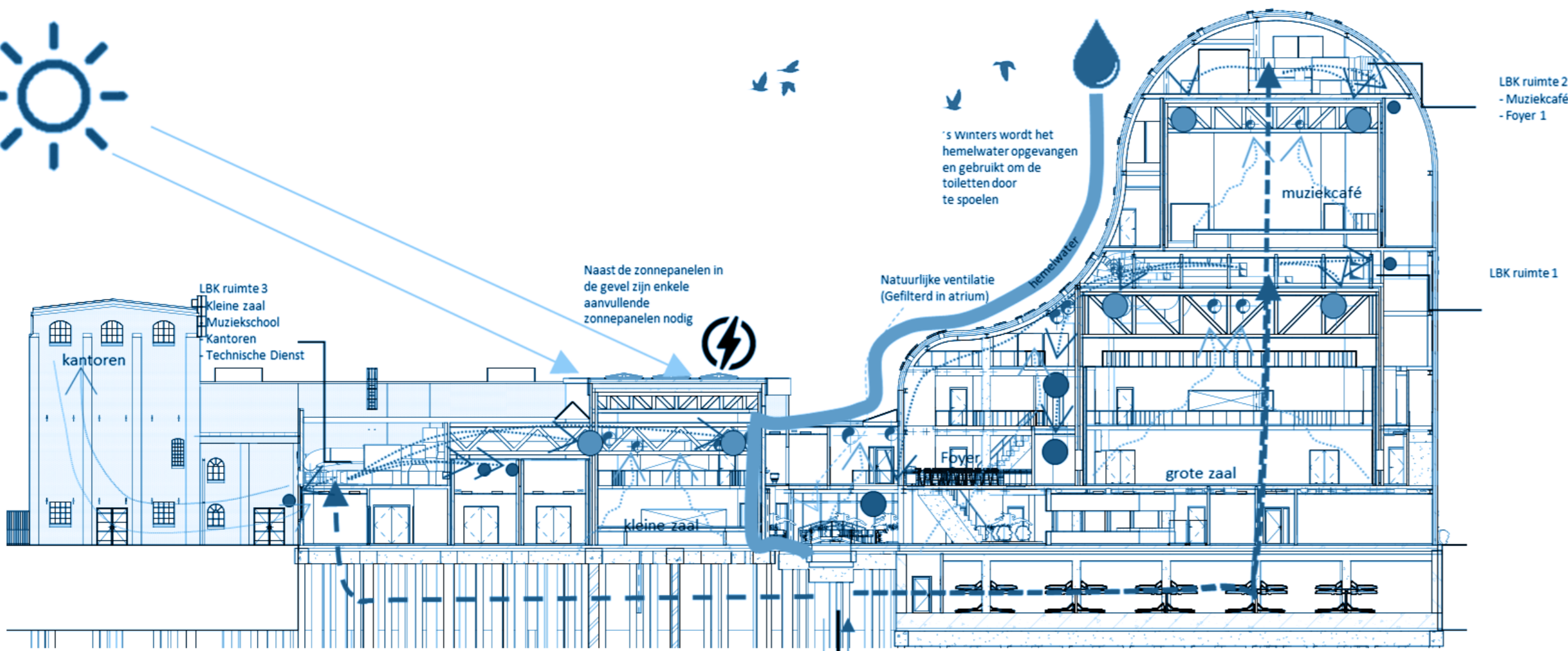


Plattegrond v4 t/m 7 1:300

# Klimaatontwerp (KO)

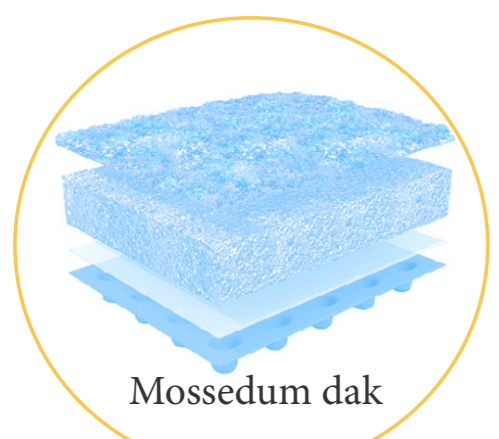
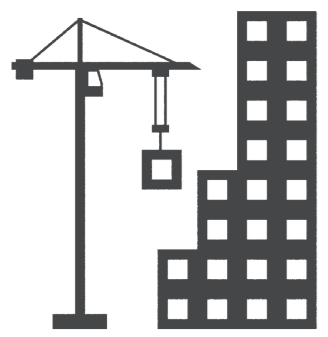


## Klimaatschema zomer



## Klimaatschema winter

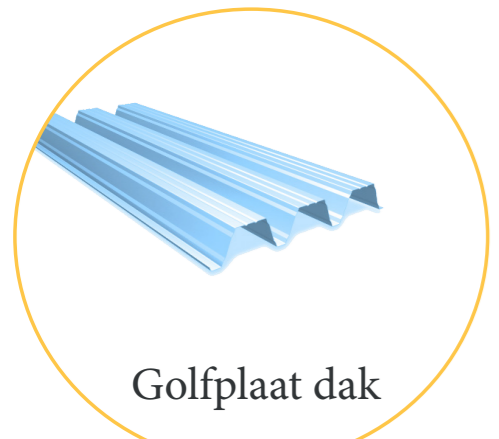
# Draagconstructie (DC)



Mossedum dak



Breedplaatvloer



Golfplaat dak



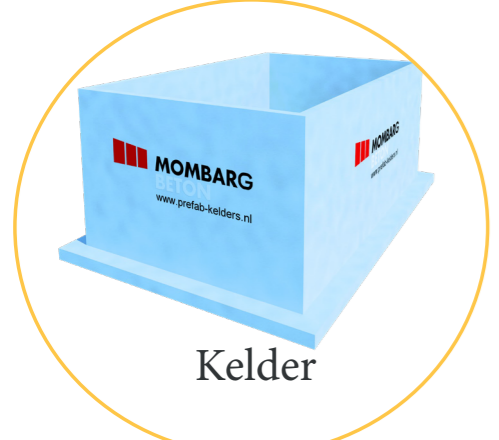
IPE kolommen / liggers



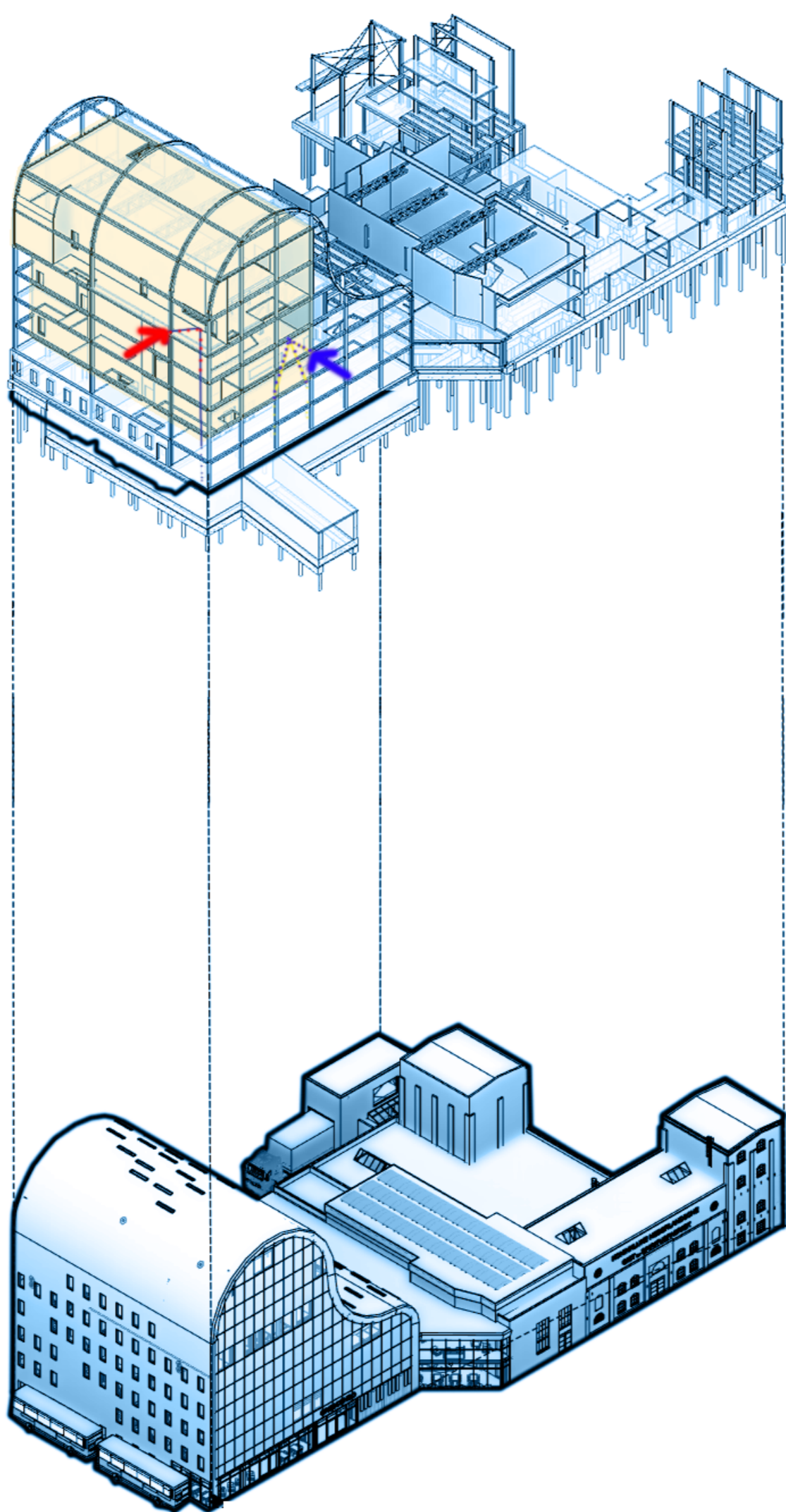
HEA kolommen / liggers



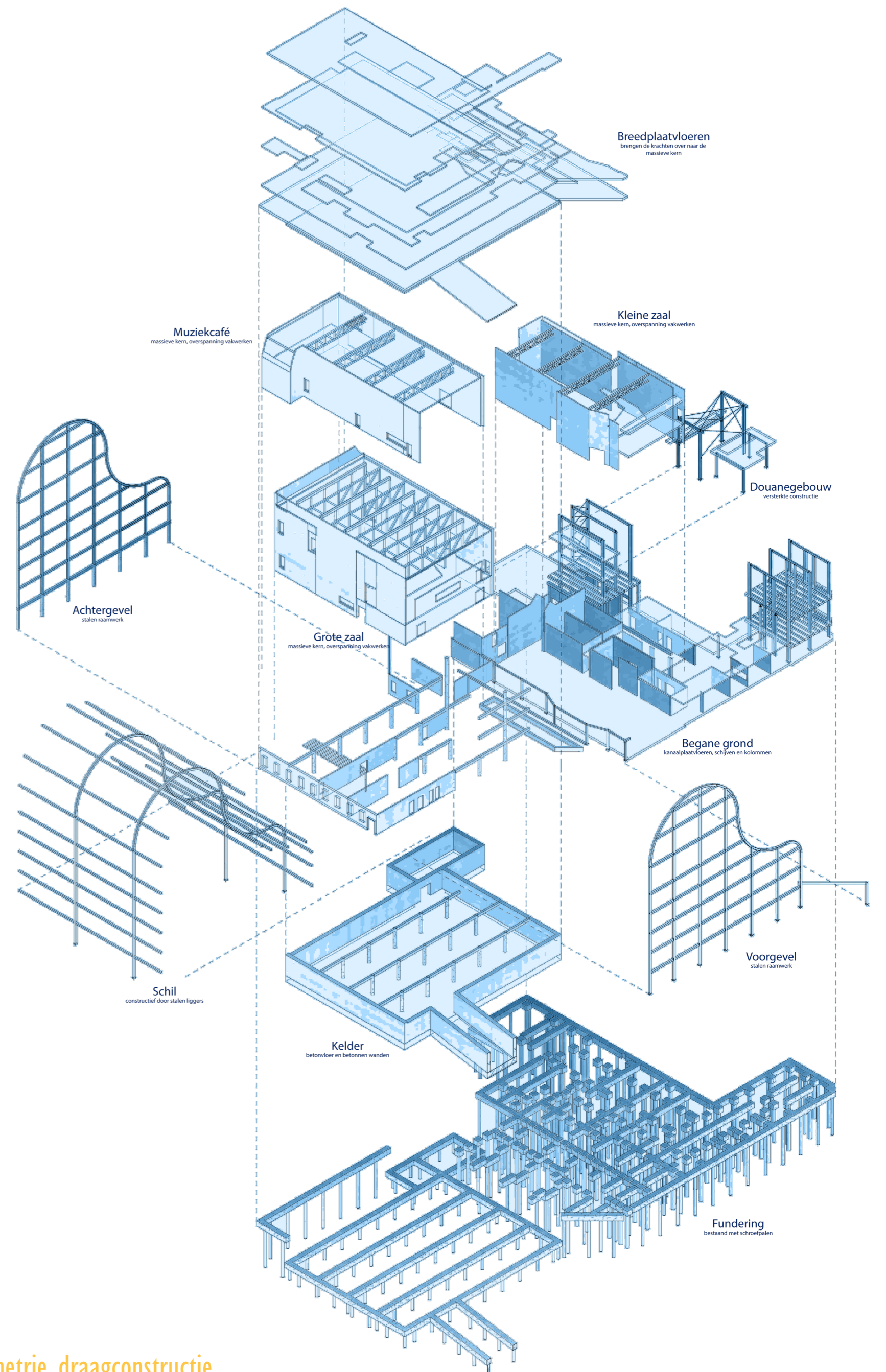
Schroefpaal



Kelder



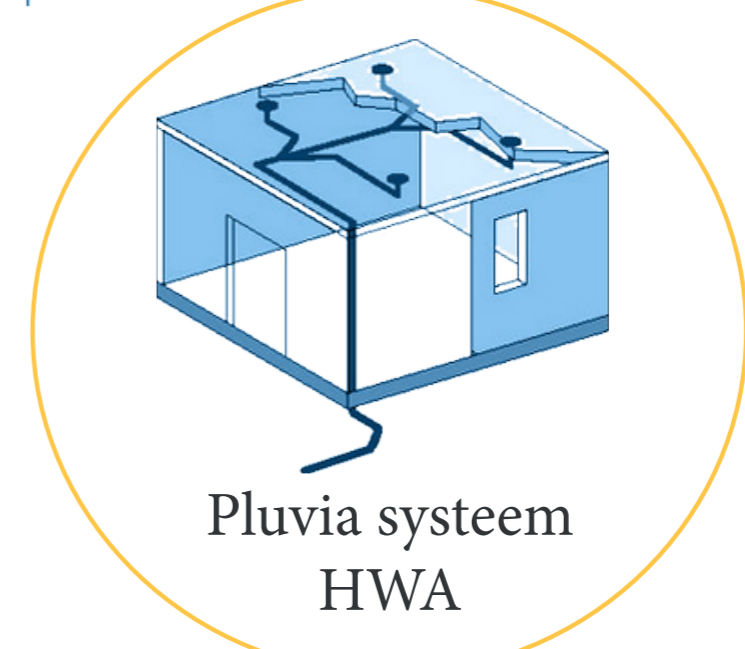
Afdracht krachten op massieve kern



Axometrie draagconstructie



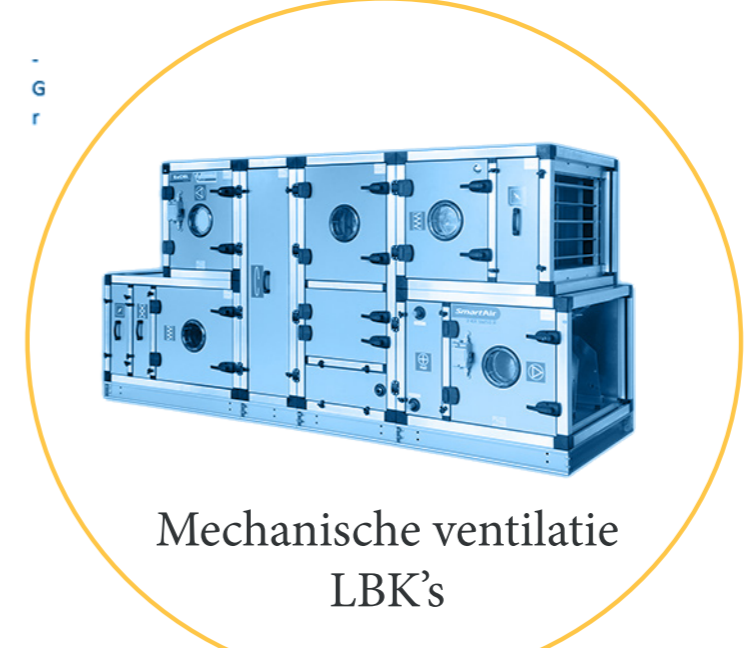
Warmte koude opslag (WKO)



Pluvia systeem HWA



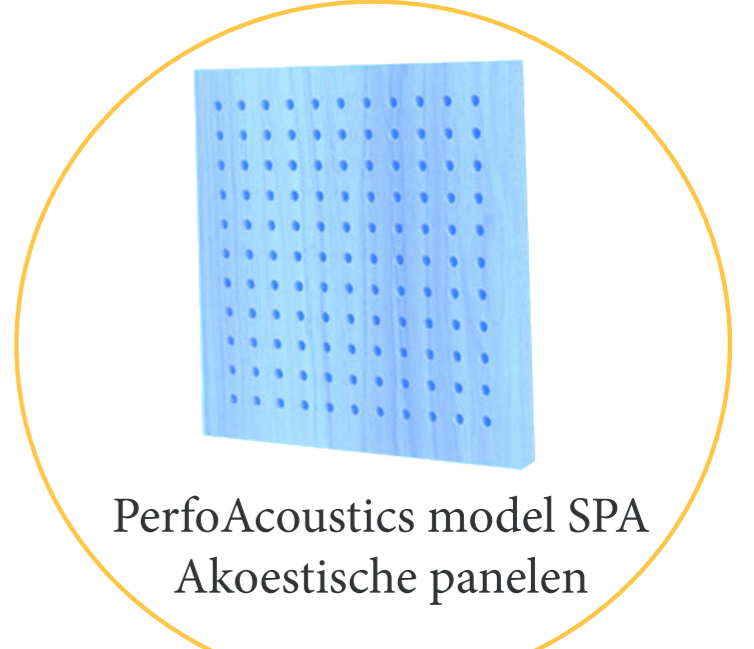
Biodiversiteit op mossedum dak



Mechanische ventilatie LBK's



Solarix D-673-20 Gevelzonnepaneel



PerfoAcoustics model SPA Akoestische panelen



Rockfon Mono Acoustic System plafond

## Aspecten klimaatontwerp

Materialen draagconstructie

